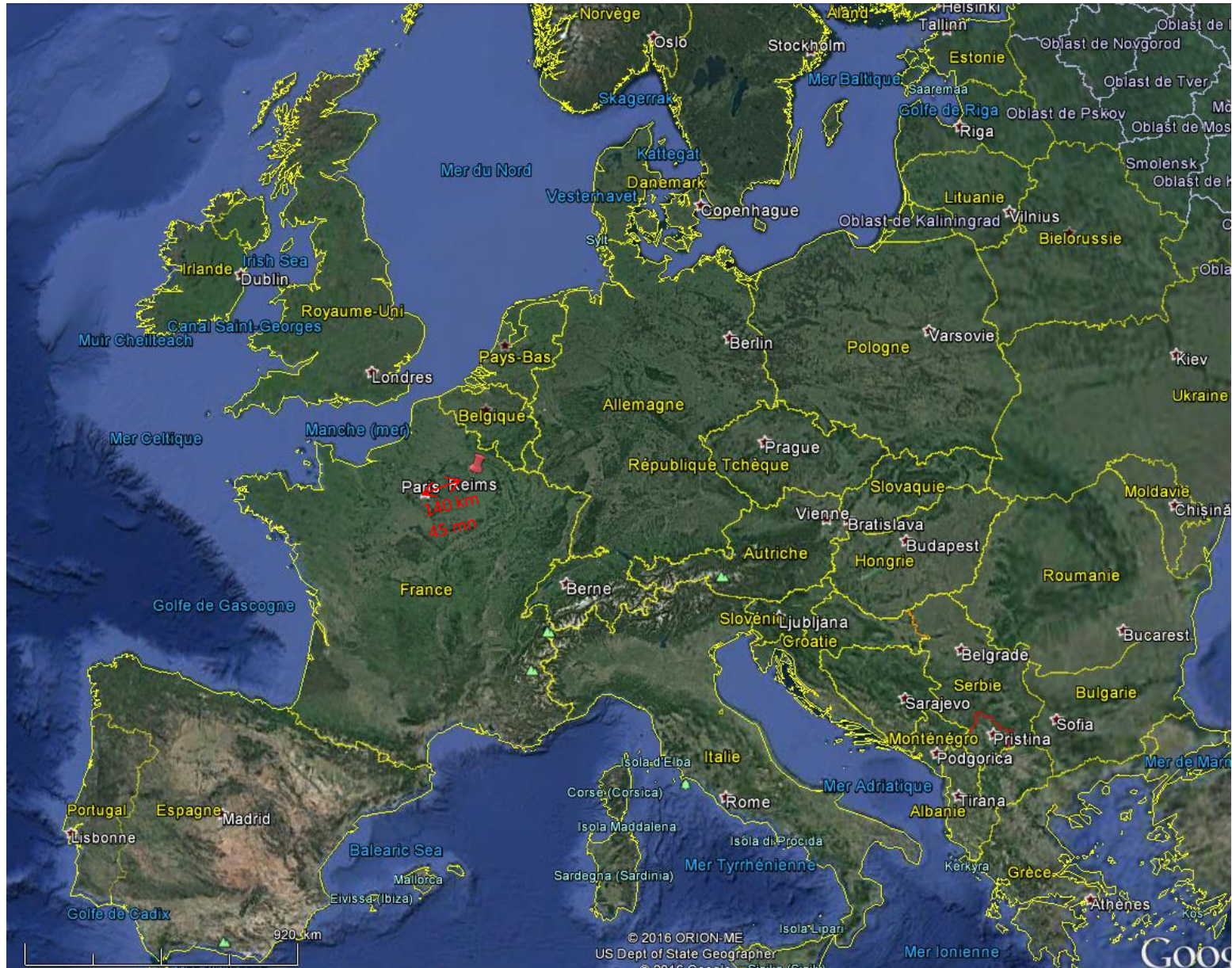


**REIMS,  
TOWARD A EUROPEAN  
BIOECONOMY CAPITAL**



# REIMS, AT THE HEART OF AGRICULTURAL EUROPE

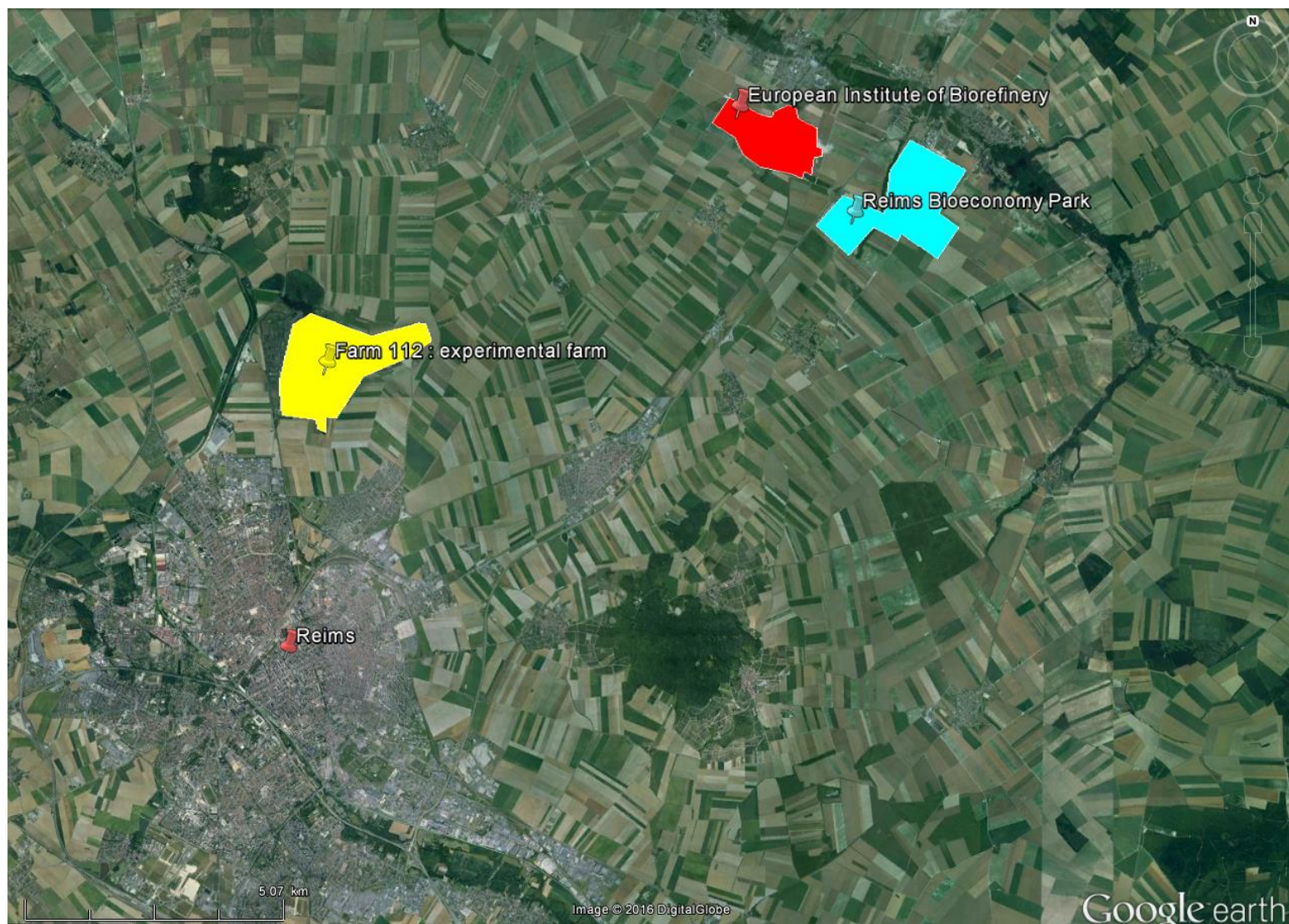
Reims



## WHY DOES THE LOCAL CONTEXT STRONGLY FAVOR A BIOBASED ECONOMY ?

- ❑ Reims, a city in the middle of an agricultural countryside...  
→ Lots of agricultural biomass feedstock !
- ❑ An historical commitment to agriculture and to agro-resources processing sugar beet, cereals, oilseed, alfalfa, and wine grape... Champagne !
- ❑ Through a longterm farmers' financial commitment, the emergence of cooperatives, which are now world-class agro-industrial companies (Vivescia, Cristal Union...)
- ❑ An historical « innovation minded » farming with a mutualised private research structure (ARD), owned by major players in French agribusiness as well as regional farming cooperatives
- ❑ A financial backing by the City Council for more than 30 years to the scientific research and to the agro-industrial R&D, aimed at developing industrial biotechnologies to create new market opportunities for the regional agricultural feedstock (bioenergy, biomolecules and agro-materials)
- ❑ A world-class Competitiveness Cluster Industries & Agro-Ressources (IAR Cluster) since 2005

REIMS, A CITY IN THE MIDDLE OF AN AGRICULTURAL COUNTRYSIDE...



## WHY DOES THE LOCAL CONTEXT STRONGLY FAVOR A BIOBASED ECONOMY ?

- The European Institute of Biorefinery located in the outskirts of Reims :
  - One of the largest biorefinery in the world (4 Mt of biomass processed / year)
  - 1 billion € in capex and around 1 200 employees
  - A biorefinery unit, a cellulosic ethanol pilot installation
  - An open technological platform for the industrial scaling-up of biotechnology processes and an industrial demonstration unit
  - Private and public R&D centers : 200 on-site scientists



## A STRATEGY TO FOSTER A BIO-BASED ECONOMIC DEVELOPMENT IN REIMS

- ❑ A extended support by the « Greater Reims » for the current decade to 4 research and teaching chairs : → a 30 M€ partnership between Reims Metropole, the Regional Council and the County Council
- ✓ CentraleSupélec engineering school : a « Biotechnology » chair
- ✓ AgroParisTech engineering school : an « Industrial Agro-Biotechnology » chair
- ✓ University of Reims Champagne-Ardenne : an « Agricultural Resources Fermentation Enzymes » chair
- ✓ Neoma Business School : an « Industrial Bioeconomy » Chair



→ The European Center of Biotechnology and Bioeconomy located near the Biorefinery with venues to host start-up businesses



- ❑ « Farm 112 » : 240 ha for an experimental farm
- ✓ Center of excellence for upstream resource management
- ✓ Focused on research and innovation to support farmers in alternative production systems
- ✓ A key point for innovation in biomass for biorefineries and green chemistry
- ✓ Part of a network of other experimental platforms in France



## A STRATEGY TO FOSTER A BIO-BASED ECONOMIC DEVELOPMENT IN REIMS

- ❑ A world-class High Performance Computing facility at the University of Reims Champagne-Ardenne (151<sup>st</sup> ranking in the World Top 500) with ERDF, State, Reims Metropole and regional funds
- ✓ Fostering high performance computing / high performance data analytics
- ✓ To increase the use of numerical simulation, data analytics and high performance computing for boosting competitiveness (to process agricultural data, biomolecular modelling, bioreactor and downstream processing simulation, etc.)



- ❑ “Reims Bioeconomy Park” : a business park (193 ha) dedicated to bio-related activities, built by the Chamber of Commerce & Industry with ERDF and regional funds





Reims.fr

ATTRACTIVE



Reims.fr

